

# CURVE DATA

C	D	R	T	L
A	44-58-35	10.51751	544.76772	225.531
B	44-58-35	13.81399	414.76772	171.711
C	44-58-35	16.15028	354.76772	146.872

ALL UNMARKED CURVES ARE 30.0' TANGENT.

## BUILDING LINES

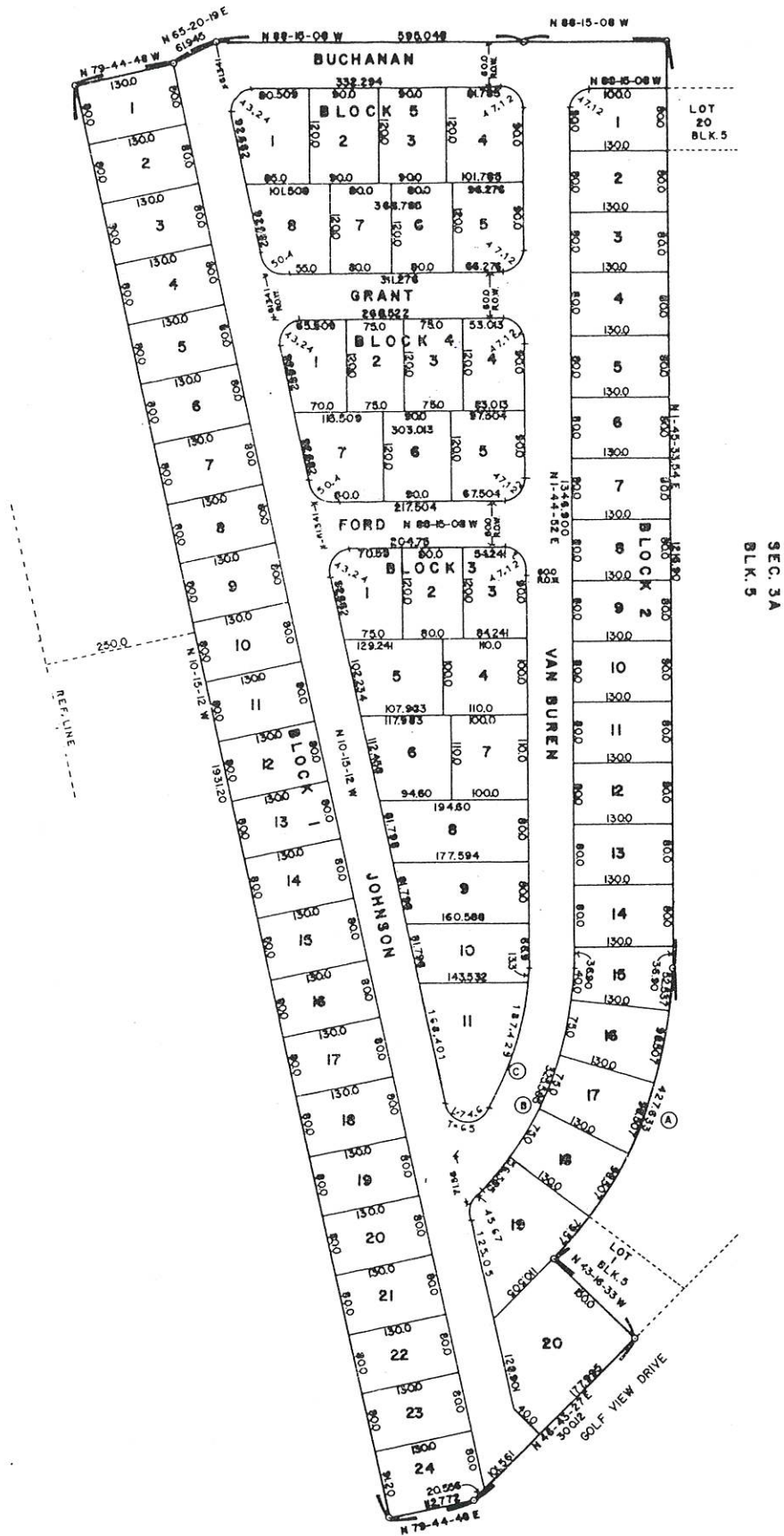
- 25' ON THE FRONT OF ALL LOTS.
- 20' ON THE REAR OF ALL LOTS.
- 10' ON THE STREET SIDE OF ALL CORNER LOTS.
- 5' ON THE SIDE (BETWEEN) OF ALL LOTS.

## UTILITY & DRAINAGE EASEMENT

- 5' ON THE FRONT OF ALL LOTS.
- 10' ON THE REAR OF ALL LOTS.
- 5' ON THE STREET SIDE OF ALL CORNER LOTS.
- 5' ON THE SIDE OF ALL LOTS (10' TOTAL BETWEEN ALL LOTS).
- OTHERS AS SHOWN.

THERE IS A 5 FOOT WIDE ANCHOR AND GUY EASEMENT EXTENDING 20 FEET BEYOND ANY UTILITY EASEMENT OR PUBLIC R.O.W. WHERE AND WHEN NECESSARY FOR GUYS AND ANCHORS TO SUPPORT OVERHEAD UTILITY LINES.

ALL SIDE LOT LINES ARE PERPENDICUALR OR RADIAL TO STREET LINES.



# HILLTOP LAKES RESORT CITY

## SECTION 10

70 LOTS-24.347 ACRES  
J.M. VIESCA GRANT, LEON COUNTY, TEXAS

HILLTOP LAKES RESORT CITY

SECTION 10

LEON COUNTY, TEXAS

E. E. JOHNSON & ASSOCIATES  
ENGINEERS

CALDWELL TEXAS

1"=100'

DRAWN BY:

DESIGNED BY: