

CURVE DATA

C	Δ	D	R	T	L
1	69-20-18	39.08334	146.59954	101.401	177.41
2	69-20-18	66.16201	86.59954	59.9	104.80
3	41-30-03	23.00607	249.04731	94.364	180.39
4	41-30-03	30.30775	189.04731	71.630	136.93
5	43-48-39	35.09210	163.0	65.658	124.845
6	43-48-39	55.48004	103.27319	41.530	78.966
7	37-25-55	23.38599	245.00138	83.008	160.06
8	37-25-55	30.97057	185.00138	62.67966	120.86
9	37-25-55	38.57117	148.54616	50.32839	97.05
10	37-25-55	64.71749	88.54616	30.0	57.85

ALL UNMARKED CURVES ARE 30.0' TANGENT.

BUILDING LINES

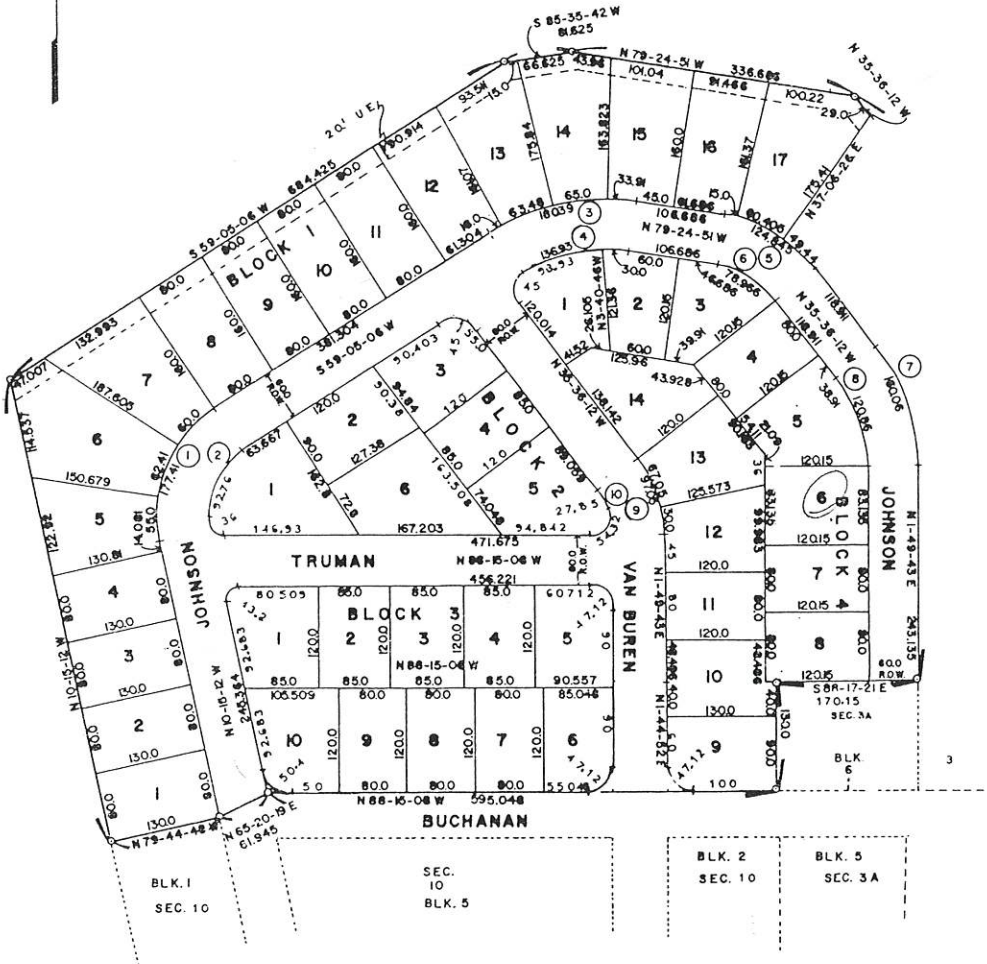
- 25' ON THE FRONT OF ALL LOTS.
- 20' ON THE REAR OF ALL LOTS.
- 10' ON THE STREET SIDE OF ALL CORNER LOTS.
- 5' ON THE SIDE (BETWEEN) OF ALL LOTS.

UTILITY & DRAINAGE EASEMENT

- 5' ON THE FRONT OF ALL LOTS.
- 10' ON THE REAR OF ALL LOTS.
- 5' ON THE STREET SIDE OF ALL CORNER LOTS.
- 5' ON THE SIDE OF ALL LOTS (10' TOTAL BETWEEN ALL LOTS).
- OTHERS AS SHOWN.

THERE IS A 5 FOOT WIDE ANCHOR AND GUY
EASEMENT EXTENDING 20 FEET BEYOND ANY
UTILITY EASEMENT OR PUBLIC R.O.W.
WHERE AND WHEN NECESSARY FOR GUYS
AND ANCHORS TO SUPPORT OVERHEAD
UTILITY LINES.

ALL SIDE LOT LINES ARE PERPENDICULAR OR
RADIAL TO STREET LINES.



HILLTOP LAKES RESORT CITY

SECTION 10A

47 LOTS-16.698 ACRES
J.M. VIESCA GRANT, LEON COUNTY, TEXAS

HILLTOP LAKES RESORT CITY
SECTION 10-A
LEON COUNTY, TEXAS

E. E. JOHNSON & ASSOCIATES
ENGINEERS
CALDWELL TEXAS

1"=100'
DRAWN BY: C.E.S. Dwyer &
DESIGNED BY: