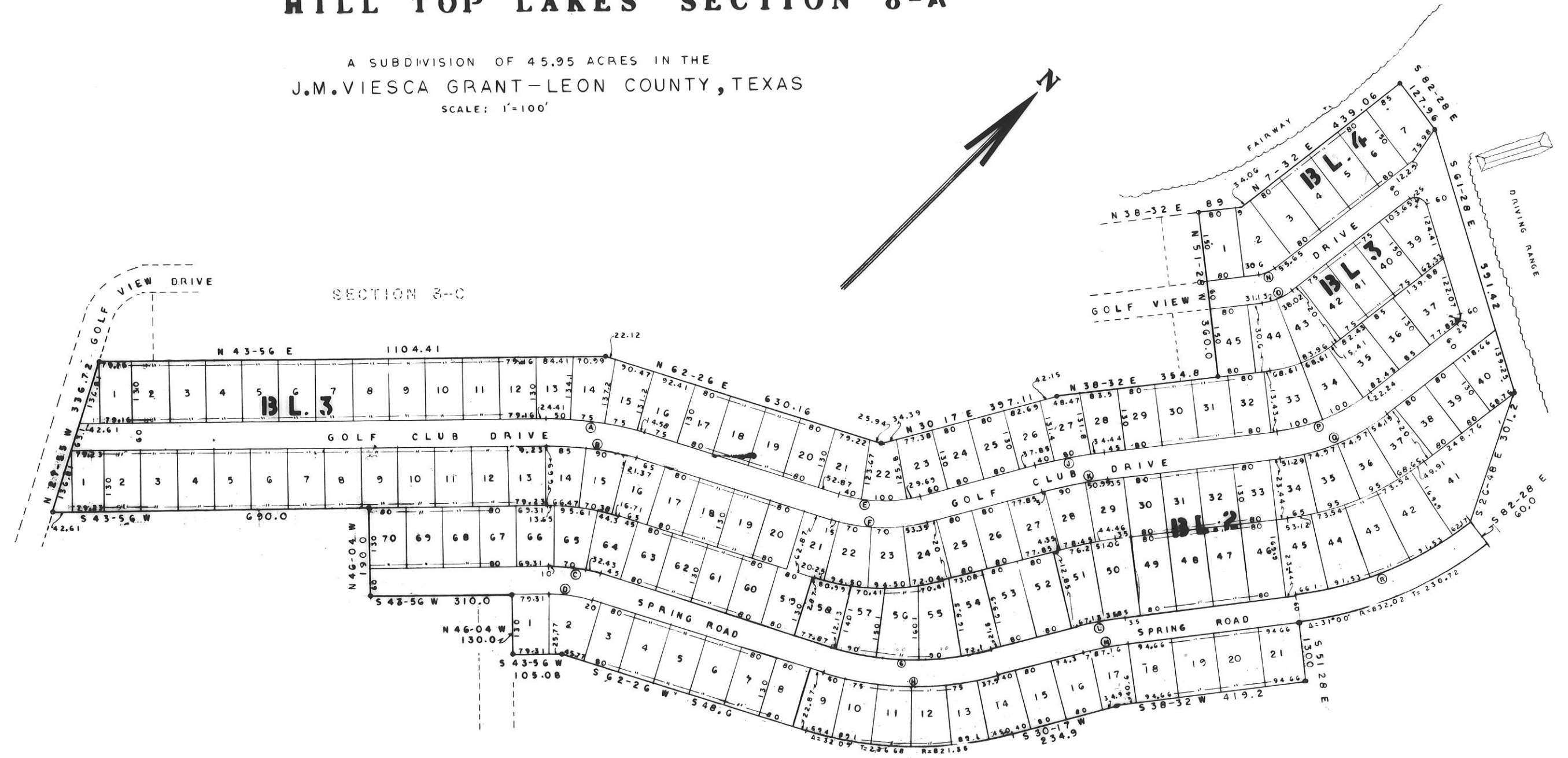


HILL TOP LAKES SECTION 8-A

A SUBDIVISION OF 45.95 ACRES IN THE
 J.M.VIESCA GRANT—LEON COUNTY, TEXAS
 SCALE: 1"=100'



CURVE DATA

	A	B	C	D	E	F	G	H	J	K	L	M	N	O	P	Q	R
A	18' 30"	18' 30"	18' 30"	18' 30"	32' 09"	32' 05"	32' 05"	32' 09"	8' 15"	8' 15"	8' 15"	8' 15"	31' 00"	31' 00"	31' 00"	31' 00"	31' 00"
D	0' 38"	9' 25"	16' 27"	19' 53"	18' 24"	15' 26"	9' 05"	8' 17"	5' 20"	5' 39"	8' 01"	8' 46"	79' 27"	43' 22"	13' 54"	12' 08"	7' 26"
R	668.22	608.22	348.22	288.22	311.35	371.35	631.35	691.35	1073.94	1013.94	714.04	654.04	72.12	132.12	412.12	472.12	772.02
T	100.00	99.00	56.71	40.94	89.72	107.01	181.93	199.22	77.44	73.11	50.58	67.16	20.0	36.64	114.29	121.06	214.89
L	214.89	196.87	112.13	92.56	174.69	208.36	354.23	387.9	154.44	148.99	102.98	84.16	39.02	69.15	222.24	265.42	402.86

NOTE

There is a 25' Building Line on the front and 5' on the sides of all lots; 10' on sides of lots adjacent to streets.
 There is a 5' Utility Easement on the front and rear of all lots and 10' on West side of lot 45 BL 3.; 8' on each side of lot line between lots 30 & 31 BL 3.

REVISED 7-31-68
 E.E. JOHNSON & ASSOCIATES
 ENGINEERS
 Caldwell 8/67 Texas